



519 Hurffville – Crosskeys Rd. Sewell, NJ 08080 (856) 256-8660

**GENERAL**

<b>Capacity:</b>	Main Floor - 1864; Balcony - 600 (includes 26 wheelchair) - Total <b>2,464</b>
<b>Box Office:</b>	Located in main lobby. Serviced by <b>Ticketmaster</b> <b>Hours:</b> Mon. - Fri., 4:00pm - 8:00pm; Sat., 10:00am - 2:00pm
<b>Parking:</b>	1,355 on-site spaces
<b>Food Concessions:</b>	Pre-show and intermission only. Operated exclusively by <b>WTLA, Inc.</b>
<b>Itinerant concessions:</b>	70% Artist / 30% Venue. House sells.
<b>Stagehands:</b>	IATSE Local 8 - Philadelphia

**TECHNICAL**

<b>Dimensions:</b>	<b>Proscenium</b> - 65'w x 25'h <b>Curtain line:</b> To wall - 40'; To beams - 32' <b>Apron</b> - 4'
<b>Wings:</b>	<b>SR</b> - 22' x 37'8" <b>SL</b> - 19' x 37'8"
<b>Rigging:</b>	<b>NO GRID</b> To beams - 69' Hanging points - 1,500 lbs. live load each (see line schedule)
<b>Fly:</b>	Counterweight / Single / T-Track <b>Arbor Cap</b> - 1,200 lbs. Line sets: 26    Batten length - 70'; Pipe trim - 53' out position
<b>Soft Goods:</b>	Main curtain - traveler    Black legs (2 sets) - 22' x 6' Borders (4 sets) - 6' x 65'    Mid-stage: White cyc, black traveler <b>All soft goods and/or scenery are subject to inspection by CBAC and the Washington Twp. Fire Department. Please provide CBAC with a copy of certification of flame proofing upon request.</b>
<b>Power:</b>	400 amp - 3 phase (3) 120/208 located SR, 20' from proscenium FOH positions hardwired
<b>Electrics:</b>	<b>On Fly System:</b> <b>1st</b> - 30 ETC Source Four PARS w/4 color wash (Red, blue, amber, No color) <b>2nd</b> - 30 Source Four PARS <b>3rd</b> - 30 Source Four PARS <b>4th</b> - Six (6) 3-color Cyc lights
<b>Lighting:</b>	<b>Front of House:</b> <b>Catwalk:</b> Lekos - (36) 19 degree Source Four; (10) 10 degree; (10) 26 degree <b>Lighting Console:</b> ETC 48-96 with color monitor <b>Follow spots:</b> (2) Zenon Super Trouper
<b>Mix Positions:</b>	FOH Mix Position 127' from DS edge    Mix position area - 21'6" x 7'6" <b>Sound snake must be a minimum of 250'</b>

**Continued on next page**

<b>Intercom:</b>	TELEX - Location: Control Room (2); Mgr's Office (1); SR & SL
<b>Video:</b>	Wired for video production and/or closed circuit video. Camera positions: 8
<b>Sound:</b>	Loudspeaker cluster hung over proscenium (2 subs, 2 fills, 4 mains) Speakers under balcony. Allen & Heath 32 - channel GL 3000 w/phantom power. <b>Rack:</b> CD player (Denon), Dual cassette (Denon), 20 inputs; booth speakers Electro Voice wireless mic systems - 2 handheld
<b>Shore Power:</b>	2 buses - 50 amp 208v in parking area (must bring tails)
<b>Orchestra Shell:</b>	Wenger Diva - full stage

**EQUIPMENT & SERVICES FEES**

<b>Lighting System</b>	See tech info	1	\$1,000.00
<b>Sound System</b>	See tech info	1	\$250.00
<b>Piano</b>	Estonia 9' Concert Grand	1	\$350.00
<b>Music Stands</b>	Manhasset	90	No charge
<b>Music Stand Lights</b>	Clip on	25	No charge
<b>Musician chairs</b>	black cushioned	75	No charge
<b>Band Risers</b>	4' x 8' x 8" - 16" (adjustable)	4	\$25.00 per riser
<b>Band Risers</b>	4' x 8' x 16" - 24" (adjustable)	4	\$25.00 per riser
<b>Orchestra Shell</b>	Full stage Wenger Diva	1	\$250.00 plus labor TBD
<b>Microphone</b>	Electro Voice handheld	2	No charge
<b>Microphone stands</b>		8	No charge
<b>Monitors</b>	various	4	No charge
<b>Wardrobe racks</b>	various	8	No charge
<b>Steamer</b>		1	\$75.00
<b>6' Tables</b>		8	\$10.00 per table
<b>Towel Service</b>	bath and hand	10 dozen	\$1.00 per towel - 2 doz. minimum
<b>Shore Power</b>	See tech info		\$100.00
<b>Video</b>	call TD for specs		TBD



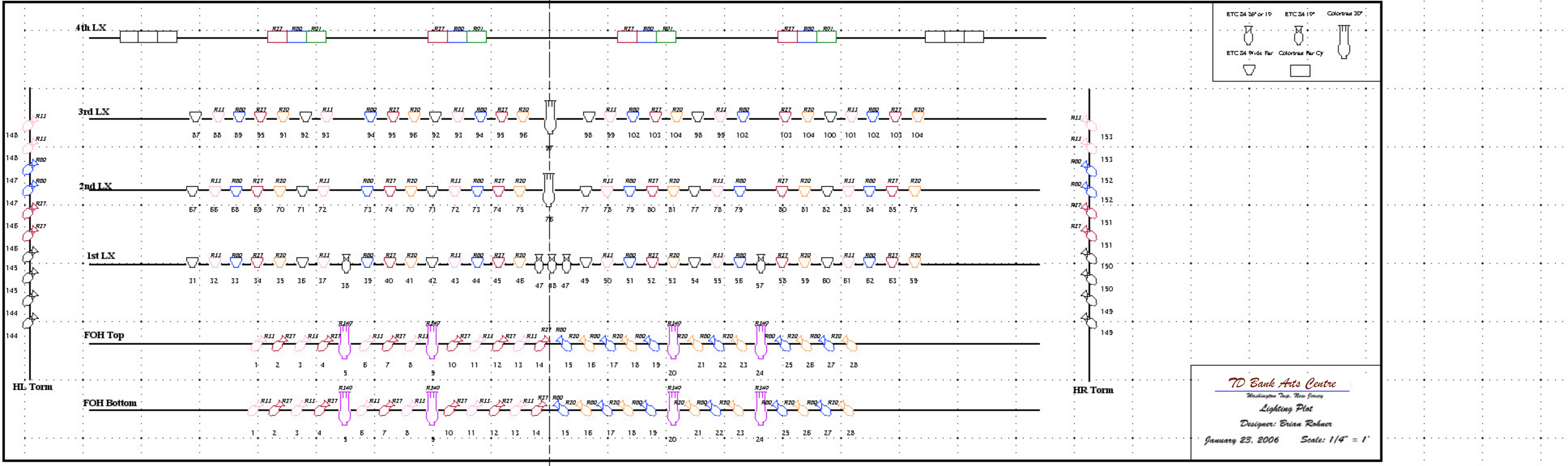
**TD Bank Arts Centre**

## Backstage Info

Room	Stage Location	Dimensions	Facilities	Phone	Internet
Dressing Room A	Stage Left	16' 4" X 22'	1 Full Bath w/Shower	Internal only	No
Dressing Room B	Stage Right	16'4" X 22'	1Full Bath w/Shower	Internal only	No
Dressing Room C	Stage Right	16' 4" X 9' 4"	None	No	No
Production Office	Stage Left	16' 4" X 9' 4"	None	No	No

**\*All Dressing Rooms are carpeted and Furnished**

**\*Internet access available in Production Office only. Please contact management for specific information regarding internet access**





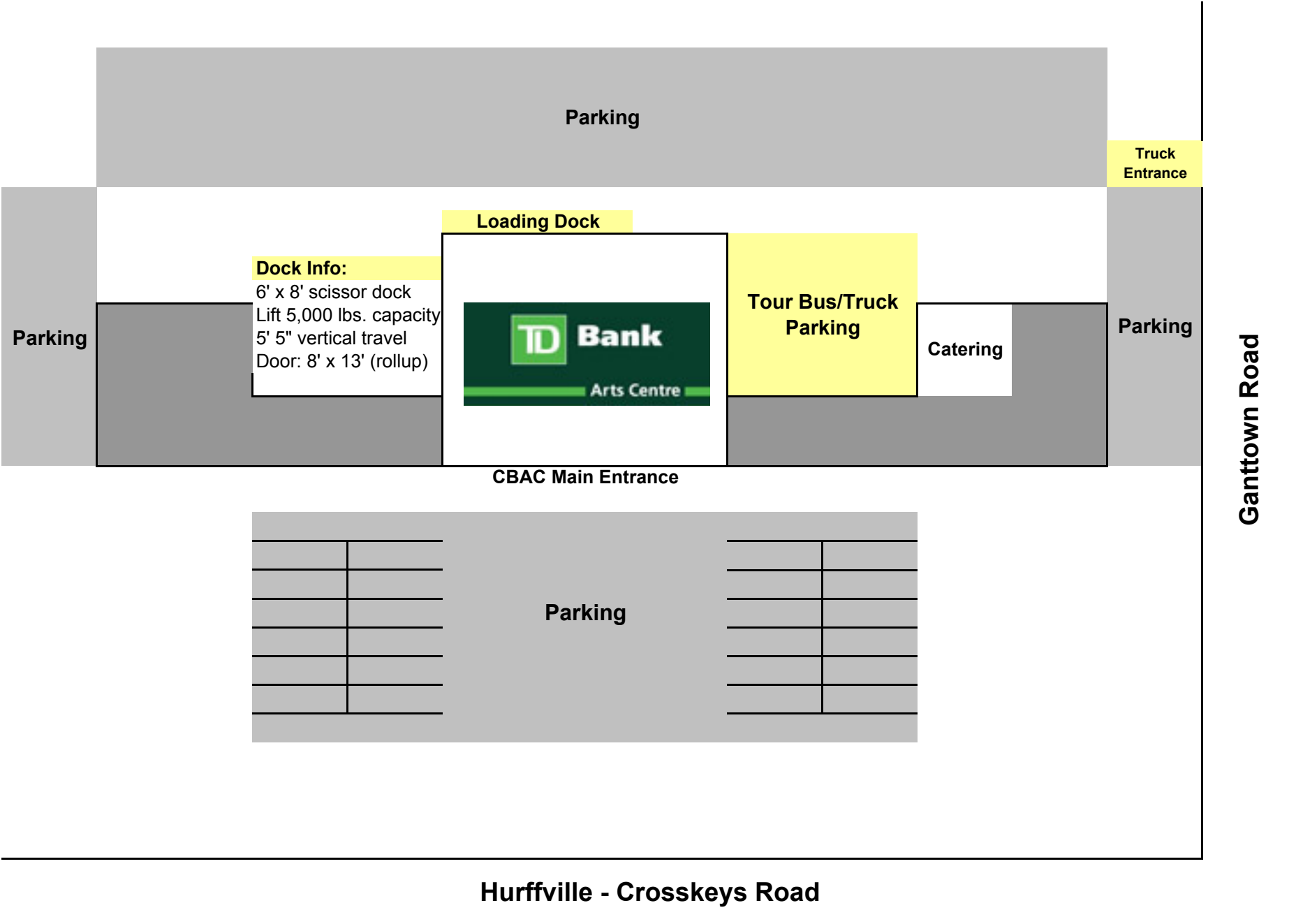
1	Grand Border	1' 4"	
2	Grand Curtain	2' 0"	
	<b>Sound Points</b>	<b>2' 6"</b>	<b>27' 8" R &amp; L of Center</b>
3	Free	2' 8"	
4	1st Electric	3' 4"	
	<b>Hanging Point</b>	<b>3' 10"</b>	<b>Center R &amp; L 11' &amp; 22'</b>
5	Cloud	4' 8"	
6	Video screen	6' 8"	
7	1st Border	8' 0"	
8	Legs	8' 8"	
9	2nd Electric	9' 4"	
	<b>Hanging Point</b>	<b>9' 10"</b>	<b>Center R &amp; L 22'</b>
10	Free	10' 8"	
11	Cloud	12' 0"	
12	Border	12' 6"	
13	Legs	13' 4"	
14	Free	14' 0"	
	<b>Hanging Point</b>	<b>14' 10"</b>	<b>Center R &amp; L 18'</b>
15	3rd Electric	16' 0"	
16	Free	16' 8"	
17	Free	17' 4"	
18	Border	18' 0"	
19	Mid Stage Traveler	18' 8"	
	<b>Hanging Point</b>	<b>19' 5"</b>	<b>Center R &amp; L 22'</b>
20	Cloud	20' 0"	
21	Border	21' 4"	
22	Free	22' 0"	
	<b>Hanging Point</b>	<b>23' 0"</b>	<b>Center R &amp; L 18'</b>
23	Legs	24' 0"	
24	4th Electric	25' 4"	
25	Free	26' 0"	
	<b>Hanging Point</b>	<b>26' 4"</b>	<b>Center R &amp; L 22'</b>
26	Free	26' 8"	
27	Cyc Drop	27' 4"	
28	Black Drop	28' 8"	
29	Crossover w/LX		

**All rigging points are hung from beam clamps and can NOT be bridled**

**Please Note:**

**45' of truss is recommended for all hanging applications**

**All rigging points have 1,500 lbs. live load**





Stage Plot

